

# Mobile Terminal 8110

## Specification

### CPU

32-bit Secure CPU, ARM 9

### Memory

8MB FLASH  
16MB SDRAM

### Display

128 x 64 pixel LCD  
LED backlight

### Keypad

10 alphanumeric keys  
9 function keys  
1 power key

### Magnetic Card Reader

ISO7812  
Track 1/2/3

### Smart Card Reader

EMV 2000  
Support SLE4442/SLE4428 memory card

### PSAM Slots

2 ISO7816

### Contactless Card Reader (Optional)

ISO 14443 TYPE A / TYPE B, SONY FELICA

### Key Management

Support MK/SK, Fixed, DUKPT  
Support 112 bits and 168 bits triple DES

### Communication Options

GPRS  
CDMA  
Wi-Fi

### Remote Download

Support remote download via FTP or TFTP

### Peripheral Ports

RS232

### Printer

Thermal printer  
Easy loading  
Paper width: 58mm  
Speed: 28 lines / sec  
Paper roll diameter: 38mm

### Power Supply

Input: 100 ~ 240VAC, 50Hz/60Hz, 1.0A  
Output: 12VDC, 3A

### Battery

2150mAh, 7.4 V

### Working Environment

Temperature: 0°C ~ 50°C  
Humidity: 10% ~ 90%

### Storage Environment

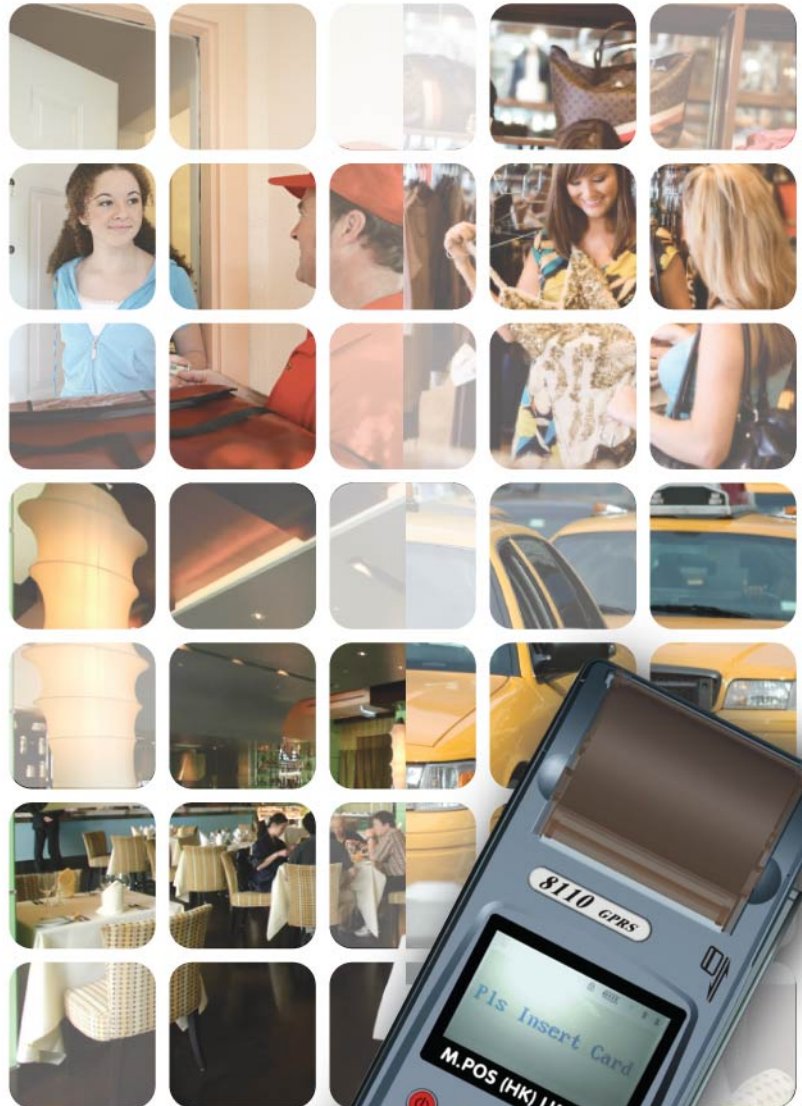
Temperature: -20°C ~ 60°C  
Humidity: 5% ~ 95%

### Dimensions

215mm (L) x 90mm (W) x 63mm (H)

### Weight

570g



8110 is a low cost all-in-one wireless handheld terminal, allowing merchants to accept payment anywhere.

### M.POS (HK) LIMITED

706 Central Plaza, 18 Harbour Road, Wanchai Hong Kong  
Tel: (852) 2388 8661 Fax: (852) 2388 8112  
Email: info@mpos.net www.mpos.net